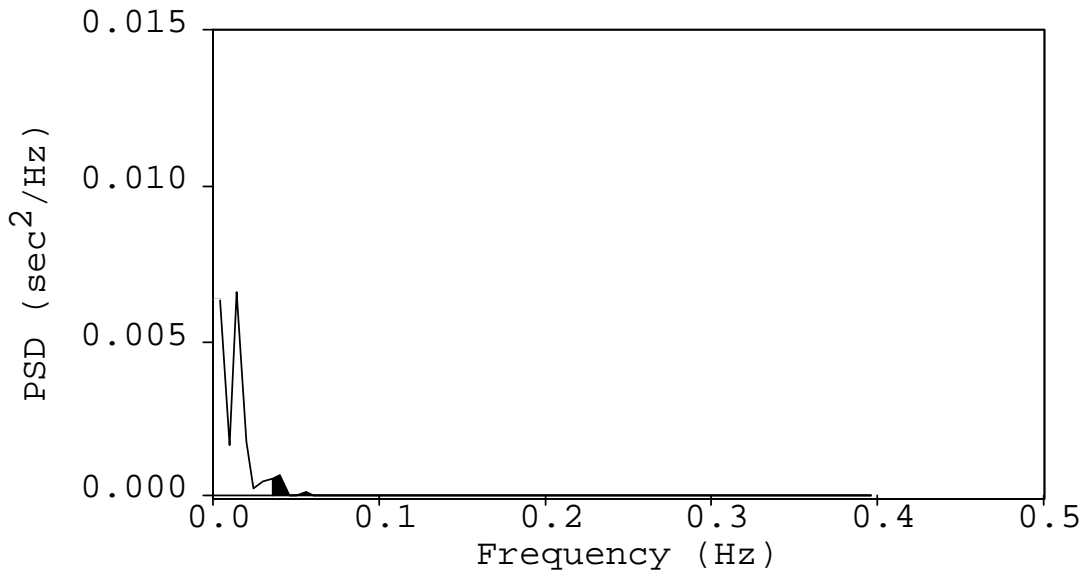
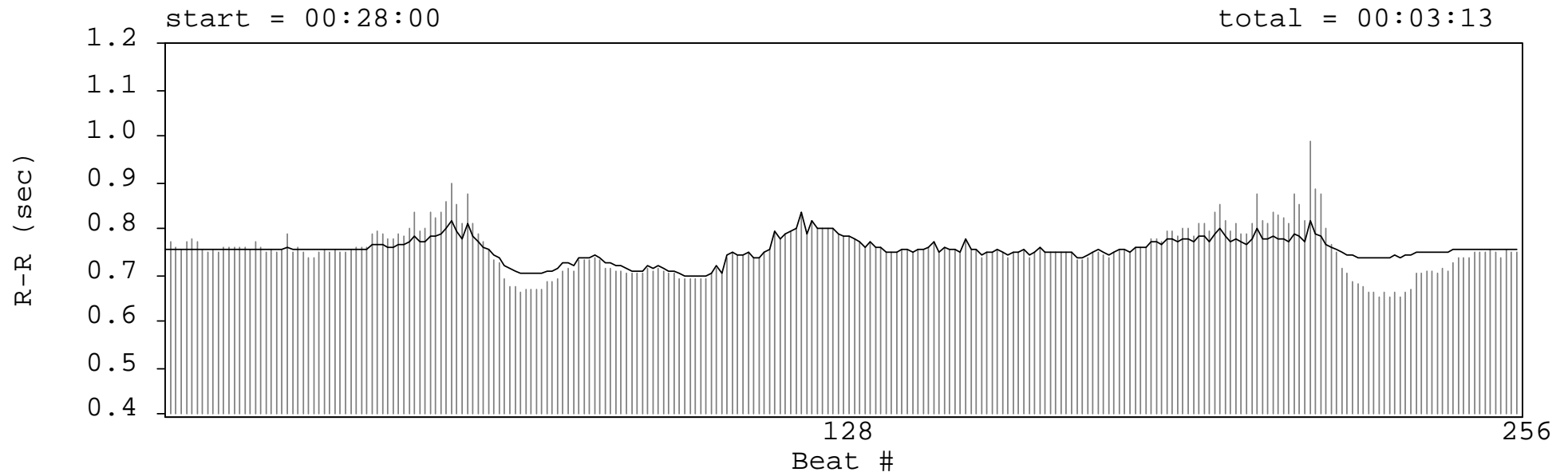


	FREQUENCY Hz	POWER msec <sup>2</sup>	POWER n.u.
Total	< 0.4	1145	
VLF	< 0.04	819	
LF	0.04-0.15	282	86
HF	0.15-0.4	44	14

LF/HF = 6.353978

256 Beat Tachogram  
Window = None

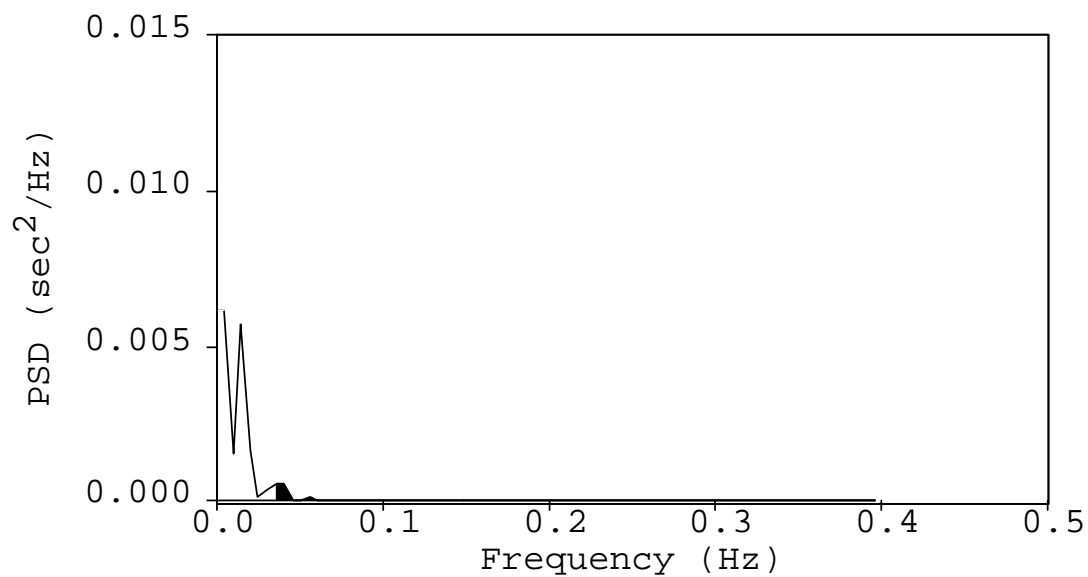
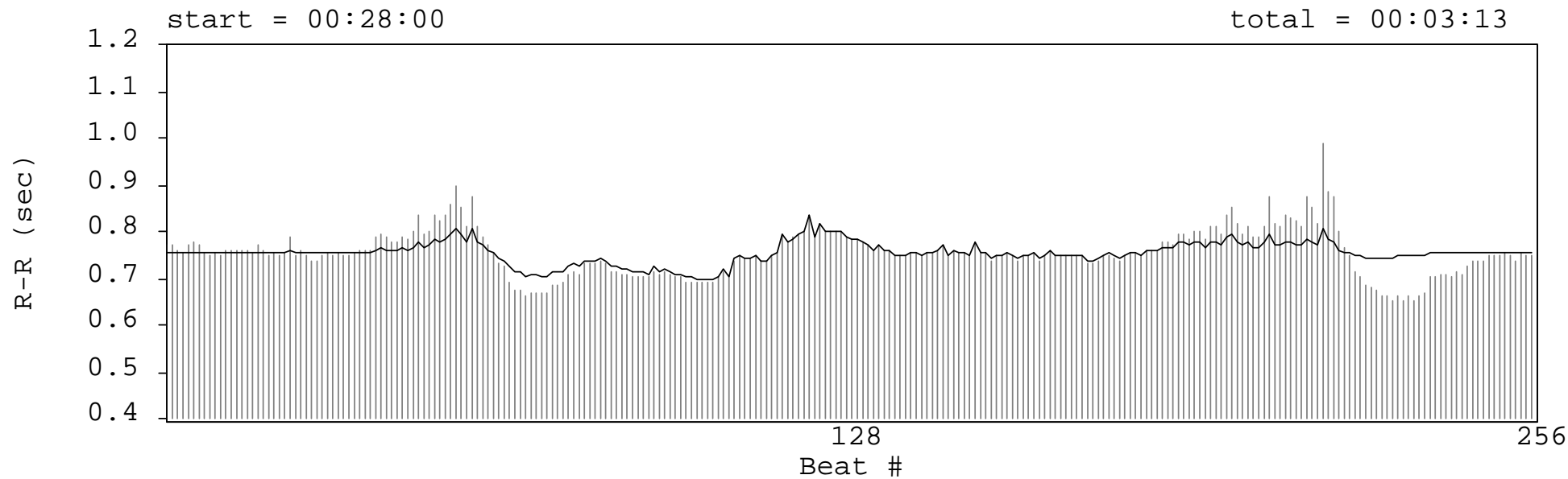


	FREQUENCY Hz	POWER msec <sup>2</sup>	POWER n.u.
Total	< 0.4	293	
VLF	< 0.04	229	
LF	0.04-0.15	55	87
HF	0.15-0.4	8	13

LF/HF = 6.594050

256 Beat Tachogram

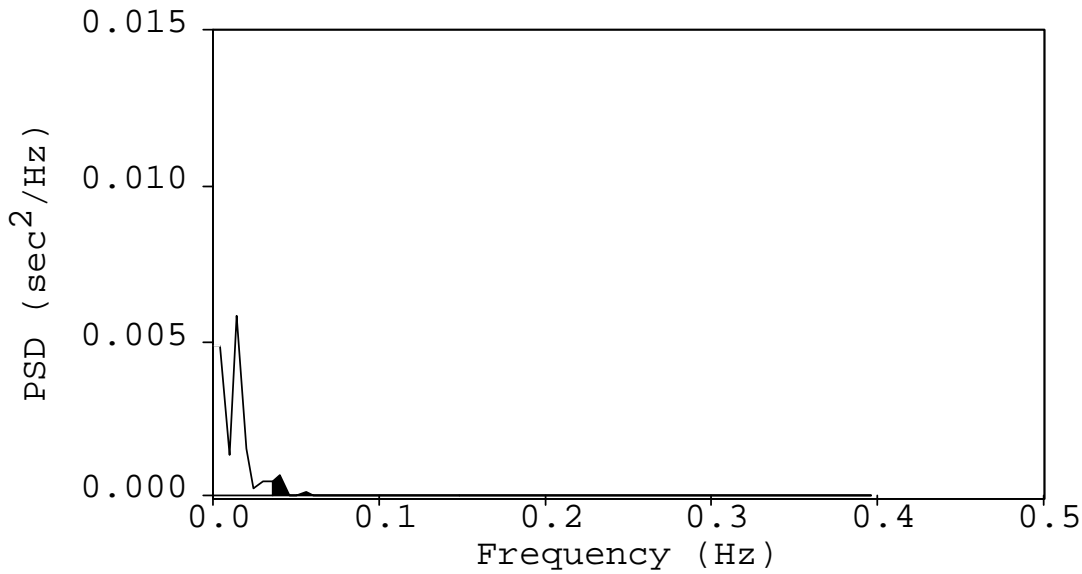
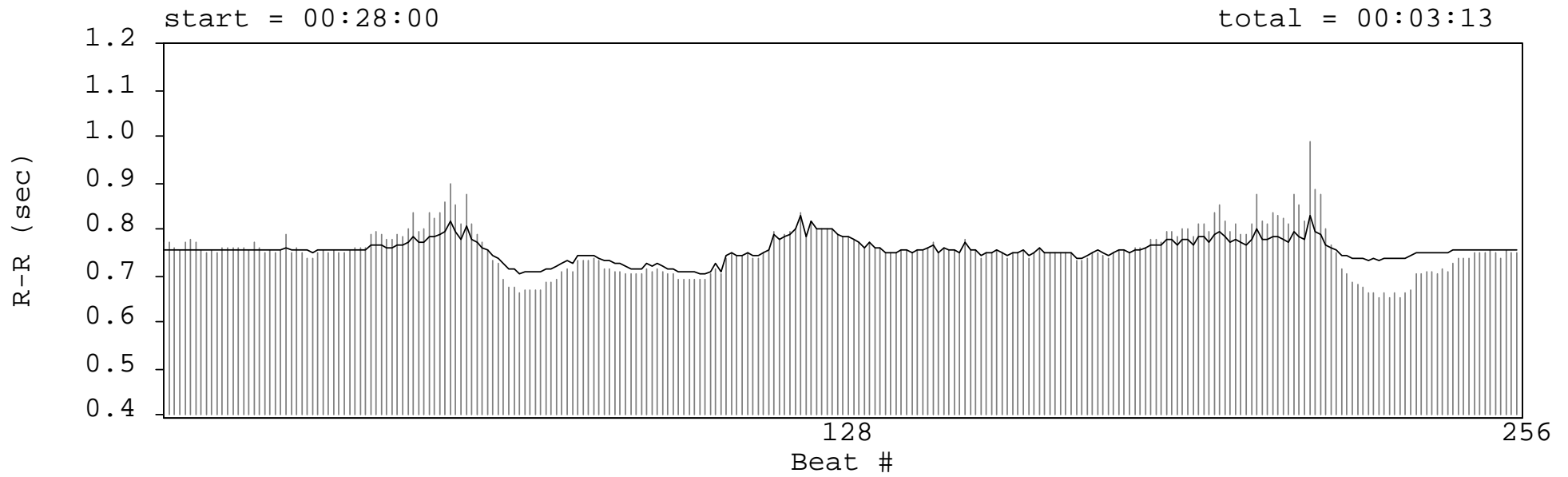
Window = Hamming



	FREQUENCY Hz	POWER msec <sup>2</sup>	POWER n.u.
Total	< 0.4	259	
VLF	< 0.04	206	
LF	0.04-0.15	46	87
HF	0.15-0.4	7	13

LF/HF = 6.539025

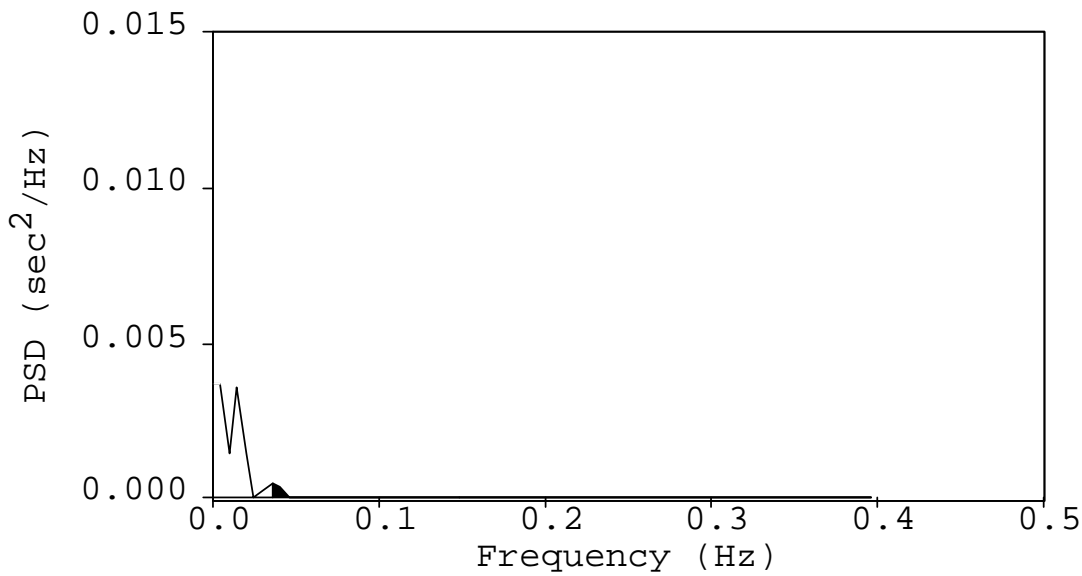
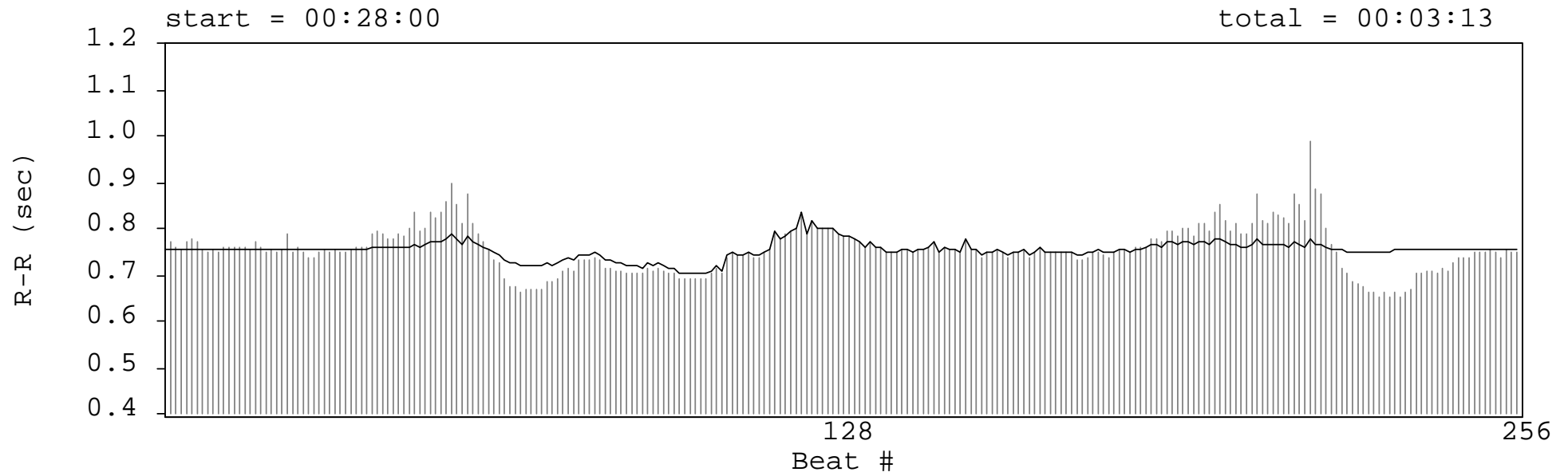
256 Beat Tachogram  
Window = Hanning



	FREQUENCY Hz	POWER msec <sup>2</sup>	POWER n.u.
Total	< 0.4	259	
VLF	< 0.04	199	
LF	0.04-0.15	52	87
HF	0.15-0.4	8	13

LF/HF = 6.577189

256 Beat Tachogram  
Window = Triangular

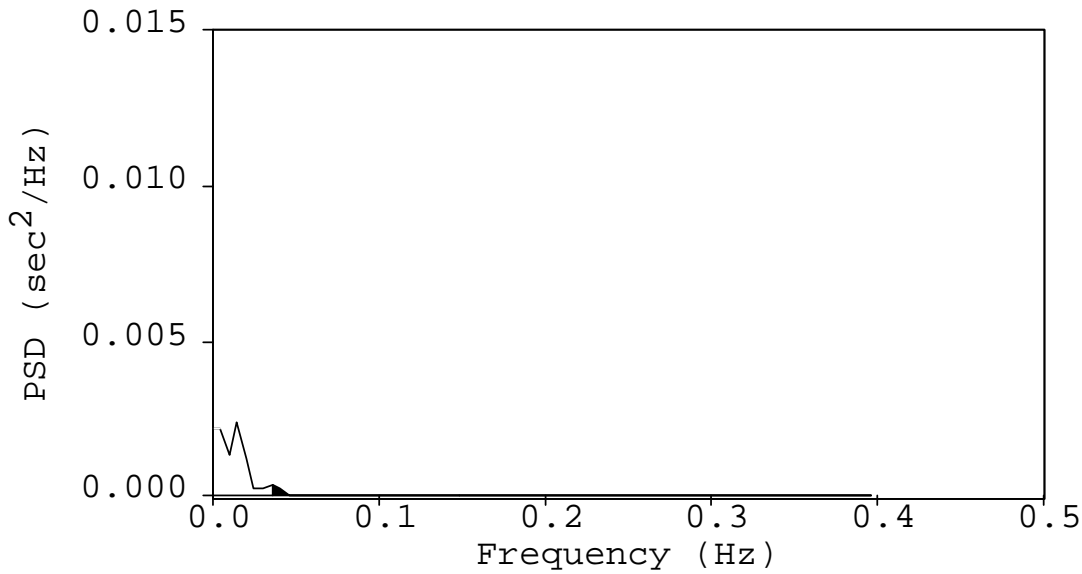
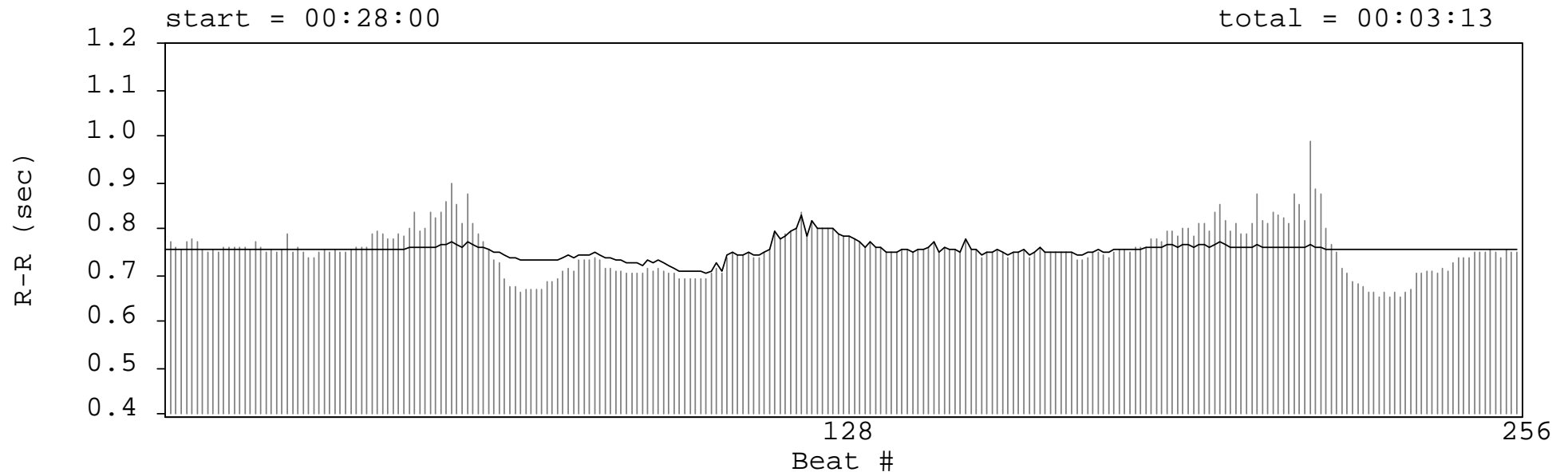


	FREQUENCY Hz	POWER msec <sup>2</sup>	POWER n.u.
Total	< 0.4	179	
VLF	< 0.04	147	
LF	0.04-0.15	28	86
HF	0.15-0.4	5	14

LF/HF = 6.103793

256 Beat Tachogram

Window = Black



	FREQUENCY Hz	POWER msec <sup>2</sup>	POWER n.u.
Total	< 0.4	135	
VLF	< 0.04	113	
LF	0.04-0.15	19	84
HF	0.15-0.4	3	16

LF/HF = 5.447705

256 Beat Tachogram

Window = Harris