



Trillium Silver™ Holter Analysis Software

Advanced Technology

Easy to Use

Accurate and Reliable
Analysis

Fast Reporting

Proven eidos™ Holter
Algorithm

Quick Return
on Investment

Customizable
Leasing Programs

Upgradable and
Expandable

Turnkey Systems Available

Choose PC Based Holter Analysis

Trillium Silver Holter Analysis Software provides easy-to-use Windows® PC based editing and analysis of Holter monitoring data from our Trillium 2000™, Trillium 3000™, and Trillium 5000™ Holter Recorders. Trillium Silver based Holter Monitoring Systems allow you to get started with just a single recorder for 2 or 3 channel, 24 hour, monitoring applications. They are easily and economically expandable to multiple recorders and workstations. Please see the back of this document for more complete details on our Trillium Silver Holter Analysis Software.

Qualify for Maximum Reimbursement

The diagnostic procedures that can be performed with Trillium Silver based Holter Monitoring Systems qualify for maximum reimbursement (CPT Code 93230).

Enhance Patient Retention

The diagnostic quality report produced by our Trillium Silver Holter Analysis Software can be used to determine if a referral to another provider is actually required. By reducing the number of unnecessary referrals you can enhance patient retention rates and improve patient satisfaction with your service while simultaneously helping to reduce the overall cost of health care.

Discover the Value Leader in Holter

Forest Medical Holter Monitoring Systems are surprisingly affordable and provide the best long term value in Holter monitoring technology. Trillium Silver based systems can be upgraded to our Trillium Gold™ or Trillium Platinum™ Holter Analysis Software when you're ready for more advanced analysis techniques. By choosing Forest Medical, you can be sure that you've made the right investment in Holter monitoring technology now and for the future.

Call Forest Medical

Call us today to get started with Holter monitoring at your practice.

Forest Medical, LLC • 6700 Old Collamer Road • East Syracuse, NY 13057
Phone: 800-844-2037 • 315-434-9000 • Fax: 315-432-8064
sales@forestmedical.com • www.forestmedical.com



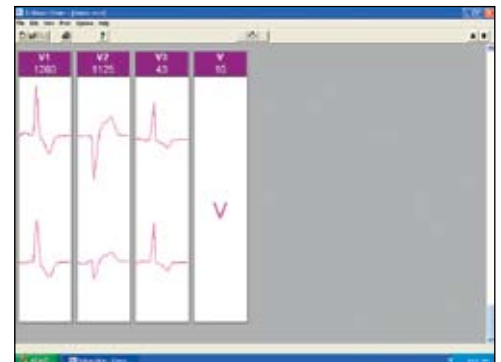
Narrative Summary



Full Disclosure 60 Seconds



Full Scale Strip



Forms Page 1

Trillium Silver™

Holter Analysis Software



Overview

- Windows 32 Bit (Win 98 SE and beyond)
- Point and click, web browser-like operation
- Each report page is displayed on screen
- Color-coded arrhythmias
- No limit to number of patient files that can be stored on disk
- On-screen help, tutorial, and hints

Analysis Algorithm

- Forest Medical *eidos*™ Holter Algorithm

Editing

- Enter Cover Page data
- Delete or add Report Strips
- Delete or add individual episodes, or delete all episodes
- Designate Artifact from Full Disclosure
- Report data is automatically recalculated
- Parameter Settings
- Change Report Strip Label

On-Screen Calipers

- Measure time intervals or ST level
- Caliper Interval Repeat
- Calipers can be saved with strip

Report

- Memory Card Data (MCD) File Storage
- One Page Report Option

Cover Page

- Patient Information
- Medications / Symptoms
- Physician Information
- Conclusions
- Parameter Settings
- Initial Signal Quality
- ICD-9 CM Drop Down Box

Narrative Summary

- Total QRS Complexes
- Average, Maximum, and Minimum Heart Rate
- Total Ventricular Ectopic Beats (VE)
- Isolated Ventricular Ectopic Beats
- Bigeminy, duration
- Trigeminy episodes
- Couplets (VE Pairs)
- Ventricular Runs, duration, longest and fastest
- Total Supraventricular Ectopic Beats (SVE)
- Isolated Supraventricular Ectopic Beats
- SVE Pairs
- SV Bigeminy
- SV Trigeminy
- Supraventricular Tachycardia (SVT), duration, longest and fastest
- Irregular Rhythm, duration
- Tachycardia, duration
- Bradycardia, duration
- Pauses (Asystole)
- Longest Pause (Asystole)
- ST Depression / Elevation
- Patient Events

Hourly Summary

- Average, Maximum, and Minimum Heart Rate
- Isolated Ventricular Ectopic Beats
- Bigeminy
- Couplets (VE pairs)
- Ventricular Runs
- Isolated Supraventricular Ectopic Beats
- SV Couplets
- Supraventricular Tachycardia (SVT)
- Tachycardia
- Irregular Rhythm
- Bradycardia
- Pauses (Asystole)
- ST Depression / Elevation
- Patient Events

Graphs

- Heart Rate
- Ventricular Ectopics
- Ventricular Runs
- Supraventricular Ectopics
- Supraventricular Tachycardia
- Artifact Index (2 or 3 channel)
- ST Level (2 or 3 channel)
- Normal R-R Histogram
- Abnormal R-R Histogram

Ventricular Forms

- Beat count and sample of up to eight Ventricular Forms

Strips

- Automatic Report Strips in full-scale (25 mm/sec) or 8, 18, or 32 mini-strips per page
- Strip List
- Extract strip from any time in the monitoring period
- Extract all strips for an episode type

Full Disclosure

- Print in 1 Hour Increments
- 15, 30, or 60 seconds per line
- 1 Channel Only
- Any combination of 2 or 3 channels
- Patient event indicated by circle

Pediatrics

- Under 20 kg Patients

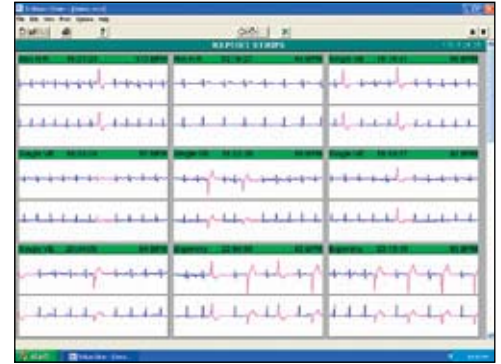
Electronic Medical Records Support

Supported Recorders

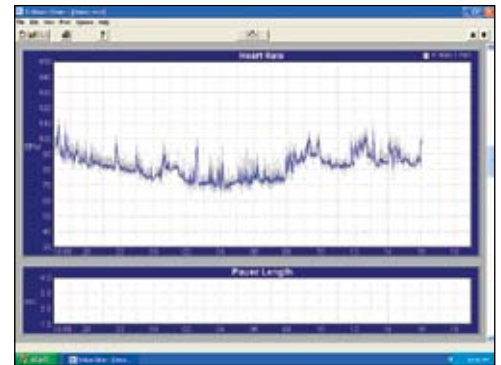
- Trillium 2000™ Holter Recorder
- Trillium 5000™ Holter Recorder
- Trillium 3000™ Holter Recorder/Analyzer

Minimum Computer Requirements

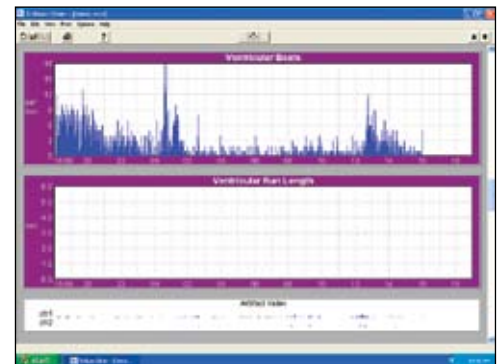
Windows 98SE; 2000; or XP, 150 MHz PII or above,
32 MB of Memory, 100 MB of Hard Disk space,
SVGA Video, (2) available USB Ports, and
a 300 dpi or higher resolution printer



Mini Strips



Graph Page 1



Graph Page 2



Graph Page 5

Notice: In the United States, Federal law restricts this device to sale by or on the order of a physician.

Forest Medical, LLC • 6700 Old Collamer Road • East Syracuse, NY 13057
Phone: 800-844-2037 • 315-434-9000 • Fax: 315-432-8064
sales@forestmedical.com • www.forestmedical.com