



# Trillium Platinum™ Holter Analysis Software

Advanced Technology

Accurate and Reliable  
Analysis

Frequency Domain  
Heart Rate Variability Analysis

Flexible Reporting

Proven eidos™ Holter  
Algorithm

Advanced Paced Beat  
Analysis and Reporting

Database Interface  
Capability

Choice of Holter Recorders

Print, Fax, and PDF Reports

Customizable  
Leasing Programs

Turnkey Systems Available

## Advance to the Next Level

Our Trillium Platinum Holter Analysis Software provides all of the features of our Trillium Gold™ software while adding Frequency Domain Heart Rate Variability (HRVf) analysis and reporting, our Trillium Explorer™ Database Interface Module, and additional capabilities. Now your practice can advance to the next level of Holter analysis with software that is both powerful and easy to use.

## Add HRVf Analysis to Your Practice

Our HRVf analysis is modeled after the European Society of Cardiology and the North American Society of Pacing and Electrophysiology Task Force's *Standards of Measurement, Physiological Interpretation and Clinical Use for Heart Rate Variability*. It includes both long and short term calculations and power spectral analysis in user programmable ranges and windowing schemes.

## Make Maximum Use of Your Data

Our Trillium Explorer Database Interface Module allows any set of Holter files to be queried and converted to a database file format (mdb) for subsequent analysis and reporting by database programs. This allows sets of Holter studies to be reviewed and sorted or screened for characteristics included in cover page or narrative summary data.

## Discover the Value Leader in Holter

Trillium Platinum can be used with our Trillium 2000™, Trillium 3000™, Trillium 4000™, or Trillium 5000™ Holter Recorders to form an advanced Holter Monitoring System. Trillium Platinum based systems are easily and economically expandable with multiple recorders and workstations and are fully upgradable as new developments arise. Choose Forest Medical products for the best long term value in Holter monitoring technology.

## Call Forest Medical

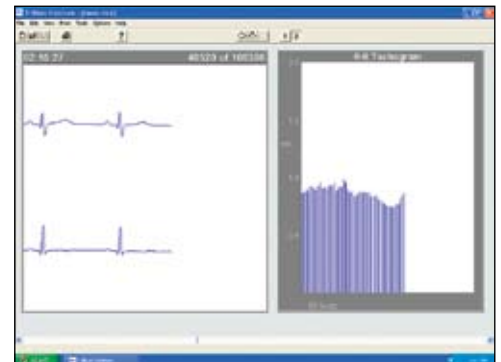
Call us today for a no obligation analysis of your Holter monitoring requirements.



Narrative Summary



Full Disclosure 60 Seconds



Superimposition



Forms Page 1

Forest Medical, LLC • 6700 Old Collamer Road • East Syracuse, NY 13057  
Phone: 800-844-2037 • 315-434-9000 • Fax: 315-432-8064  
sales@forestmedical.com • www.forestmedical.com

# Trillium Platinum™

## Holter Analysis Software



### Overview

- 32 Bit Windows® Application
- Point and click, web browser-like operation
- Each report page is displayed on screen
- Color-coded arrhythmias
- Color-coded pacer spikes
- No limit to number of patient files that can be stored on disk
- PDF Report output
- On-screen help, tutorial, and hints

### Analysis Algorithm

- Forest Medical *eidos*™ Holter Algorithm
- Adjustment for Atrial Fibrillation / Irregular Rhythm sensitivity
- High Heart Rate analysis capability (Sustained rates up to 320 BPM)

### Advanced Paced Beat Analysis / Reporting

- Single and dual chamber pacemaker spike and paced beats detection
- Percentage of pacemaker dependency (Paced Beats/Total Beats)
- Minimum, maximum and average pacer rates
- Failure to capture, failure to sense, and over-sensing
- Paced beat graphs (Rate, Frequency, and R-R Histogram)
- Fully editable paced beat form(s)

### Editing

- Enter Cover Page data
- Reconfigure Cover Page
- Delete or add Report Strips
- Delete or add individual episodes, or delete all episodes
- Change individual existing beat label
- Insert a beat
- Artifact Category Designation
- Designate Artifact from Full Disclosure
- Manually Designate Paced Beats
- Report data is automatically recalculated
- Parameter Settings
- Change Report Strip Label
- Change Form Label

### Heart Rate Variability Analysis and Reporting

- Frequency Domain (Short Term and Long Term Presentations, choice of Windowing selections (None, Hamming, Hanning, Triangular, Black, and Harris), and Customizable Power Output Table)
- Time Domain (SDNN, SDANN, SDNN Index, RMSSD, and Triangular Index Calculations)
- ASCII Data output capability

### Superimposition

- One or two beats
- Variable rate scanning
- One beat or one minute jog-back / jog-forward
- Automatic jog-back based on user reaction time
- R-R Histogram or tachogram side display
- Programmable auto stop on episode(s)

### Q-T Interval Measurement

- Q-T Interval vs. Heart Rate Graph
- Superimposition
- Editing
- Q-T Calculations (Raw or Corrected)
- Auto Q-T Calipers

### R-R Interval Measurement

- Shortest and Longest R-R Interval
- Time-domain Heart Rate Variability statistics

### On-Screen Calipers

- Measure time intervals or ST level
- Caliper Interval Repeat
- Calipers can be saved with strip
- Show Rate Measurements
- Show R-R Interval Measurements

### Report

- Memory Card Data (MCD) File Storage
- Memory Card Report (MCR) File Storage
- Copy / paste text into Windows clipboard
- Copy / paste graphs into Windows clipboard
- Customize Report Layout
- One Page Report Option

### Cover Page

- Patient Information
- Medications / Symptoms
- Print Logo
- Physician Information
- Referring Physician Information
- Conclusions
- Parameter Settings
- ICD-9 CM Drop Down Box

### Narrative Summary

- Total QRS Complexes
- Average, Maximum, and Minimum Heart Rate
- Total Ventricular Ectopic Beats (VE)
- Isolated Ventricular Ectopic Beats
- Bigeminy, duration
- Trigeminy episodes
- Couplets (VE Pairs)
- Triplets Reporting (Option)
- Ventricular Runs, duration, longest and fastest
- Idio-ventricular Rhythm (<100 BPM)
- Total Supraventricular Ectopic Beats (SVE)
- Isolated Supraventricular Ectopic Beats
- SV Couplets
- SVE Pairs
- SV Bigeminy
- SV Trigeminy
- Supraventricular Tachycardia (SVT), duration, longest and fastest
- Irregular Rhythm, duration
- Tachycardia, duration
- Bradycardia, duration
- Pauses (Asystole)
- Longest Pause (Asystole)
- ST Depression / Elevation
- Patient Events
- Pacemaker Analysis (Total Paced Beats, Failure to Capture, Failure to Sense)

### Hourly Summary

- Customizable
- Average, Maximum, and Minimum Heart Rate
- Isolated Ventricular Ectopic Beats
- Bigeminy
- Trigeminy
- Couplets (VE pairs)
- Ventricular Runs
- Isolated Supraventricular Ectopic Beats
- SVE Pairs
- SV Bigeminy
- SV Trigeminy
- Supraventricular Tachycardia (SVT)
- Tachycardia
- Irregular Rhythm
- Bradycardia
- Pauses (Asystole)
- ST Depression / Elevation
- Patient Events

### Graphs

- Heart Rate
- Ventricular Ectopics
- Ventricular Runs
- Supraventricular Ectopics
- Supraventricular Tachycardia
- Artifact Index (2 or 3 channel)
- ST Level (2 or 3 channel)
- Normal R-R Histogram
- Abnormal R-R Histogram
- Pacer Rate
- Pacer R-R Histogram
- Q-T Graph
- Pause Graph

### R-R Scatter Plot (per hour)

### Ventricular Forms

- Beat Count and Sample of up to 32 Ventricular Forms
- Beat Count and Sample of up to 32 Normal Forms
- Reclassify Forms by Prematurity and Shape
- Turn off a channel
- Find similar beats – Prospective analysis

### Strips

- Automatic Report Strips in full-scale (25 mm/sec) or 8, 18, or 32 mini-strips per page
- Strip List
- Extract strip from any time in the monitoring period
- Extract all strips of an episode type

### Full Disclosure

- Print in 1 Hour Increments
- 15, 30, or 60 seconds per line
- 1 Channel Only
- Any combination of 2 or 3 channels
- Patient event indicated by circle
- Episode Count at end of line (HR, VEs, ST, SVEs)

### Pediatrics

- Rate Parameter Settings
- High Rate Algorithm
- Under 20 kg Patients

### Alternate Outputs

- Graphs bitmapped to clipboard
- Text bitmapped to clipboard
- Summary Report ASCII text upload
- MCR File – “report-only” file (typ. <100 KB)
- MIT Format
- PDF Output
- Fax reports

### Electronic Medical Records Support

### Supported Recorders

- Trillium 2000™ Holter Recorder
- Trillium 4000™ Holter Recorder
- Trillium 5000™ Holter Recorder
- Trillium 3000™ Holter Recorder/Analyzer

### Minimum Computer Requirements

Windows 98SE; 2000; or XP, 150 MHz PII or above,  
32 MB of Memory, 100 MB of Hard Disk space,  
SVGA Video, (2) available USB Ports, and  
a 300 dpi or higher resolution printer.

Forest Medical, LLC • 6700 Old Collamer Road • East Syracuse, NY 13057  
Phone: 800-844-2037 • 315-434-9000 • Fax: 315-432-8064  
sales@forestmedical.com • www.forestmedical.com

Notice: In the United States, Federal law restricts this device to sale by or on the order of a physician.